



Company : Santos

Well : Henry 2DW1 ST1

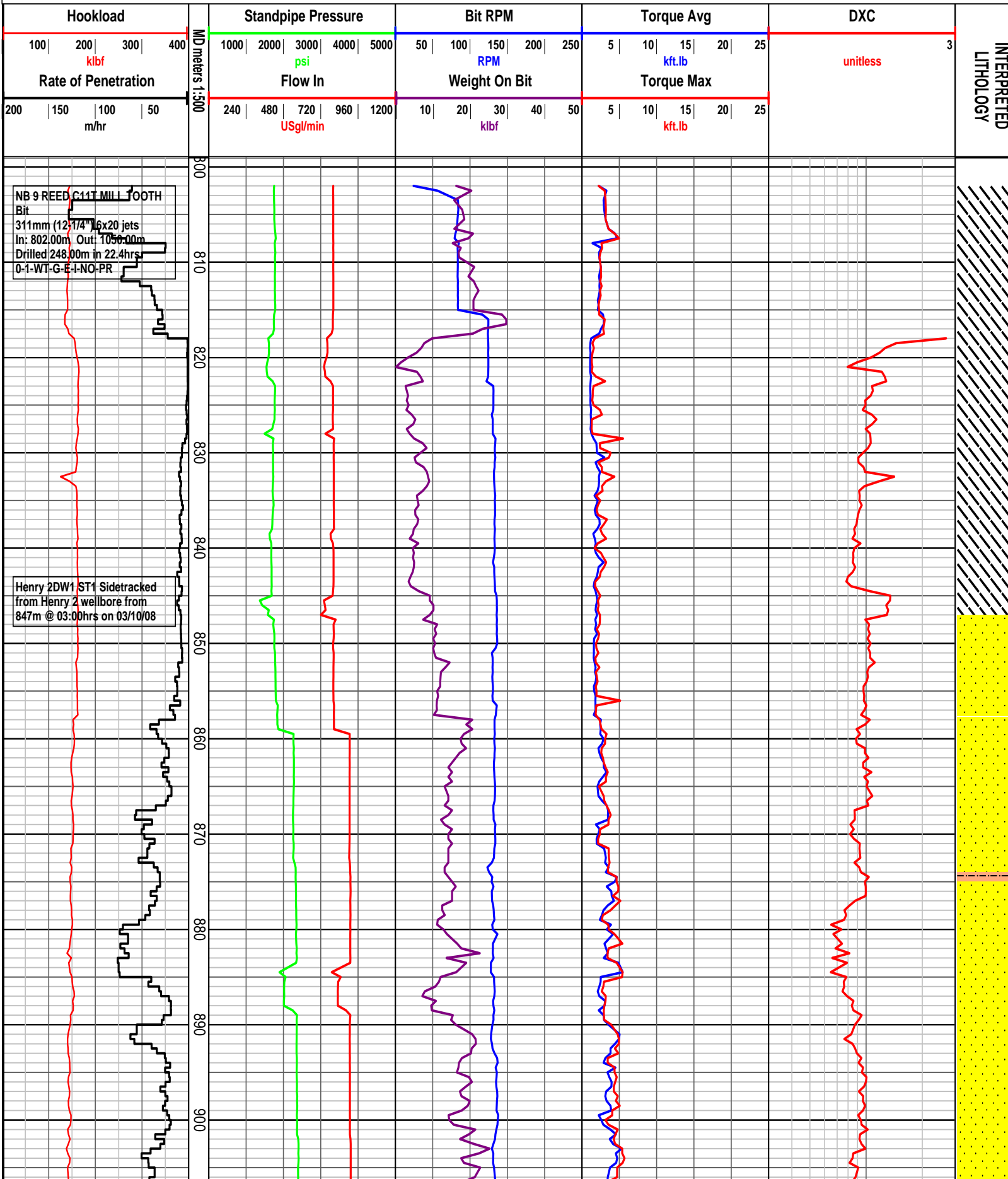
Interval : 802.00 - 2050.00 meters

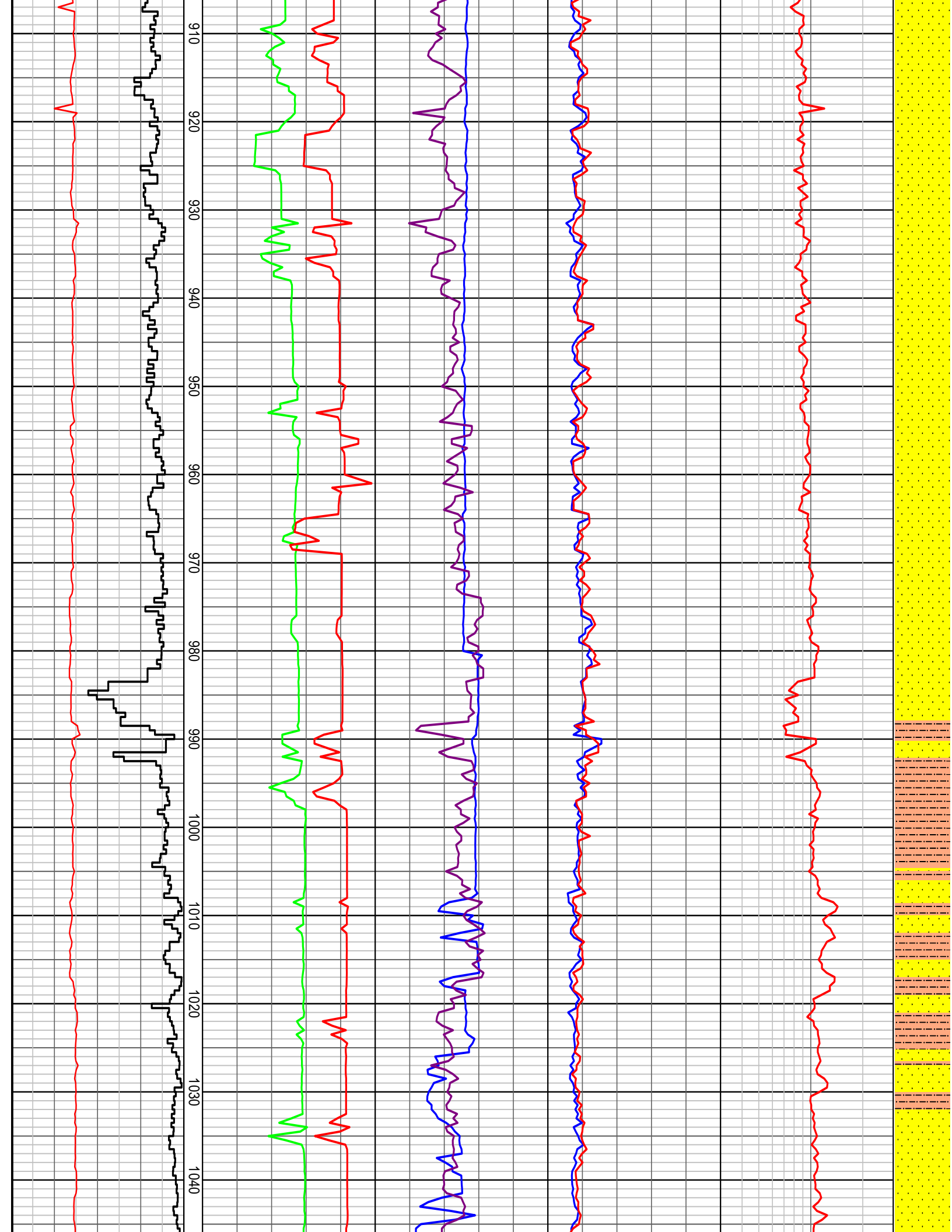
Created : 08/Oct/2008 3:43:35 AM



INTEQ

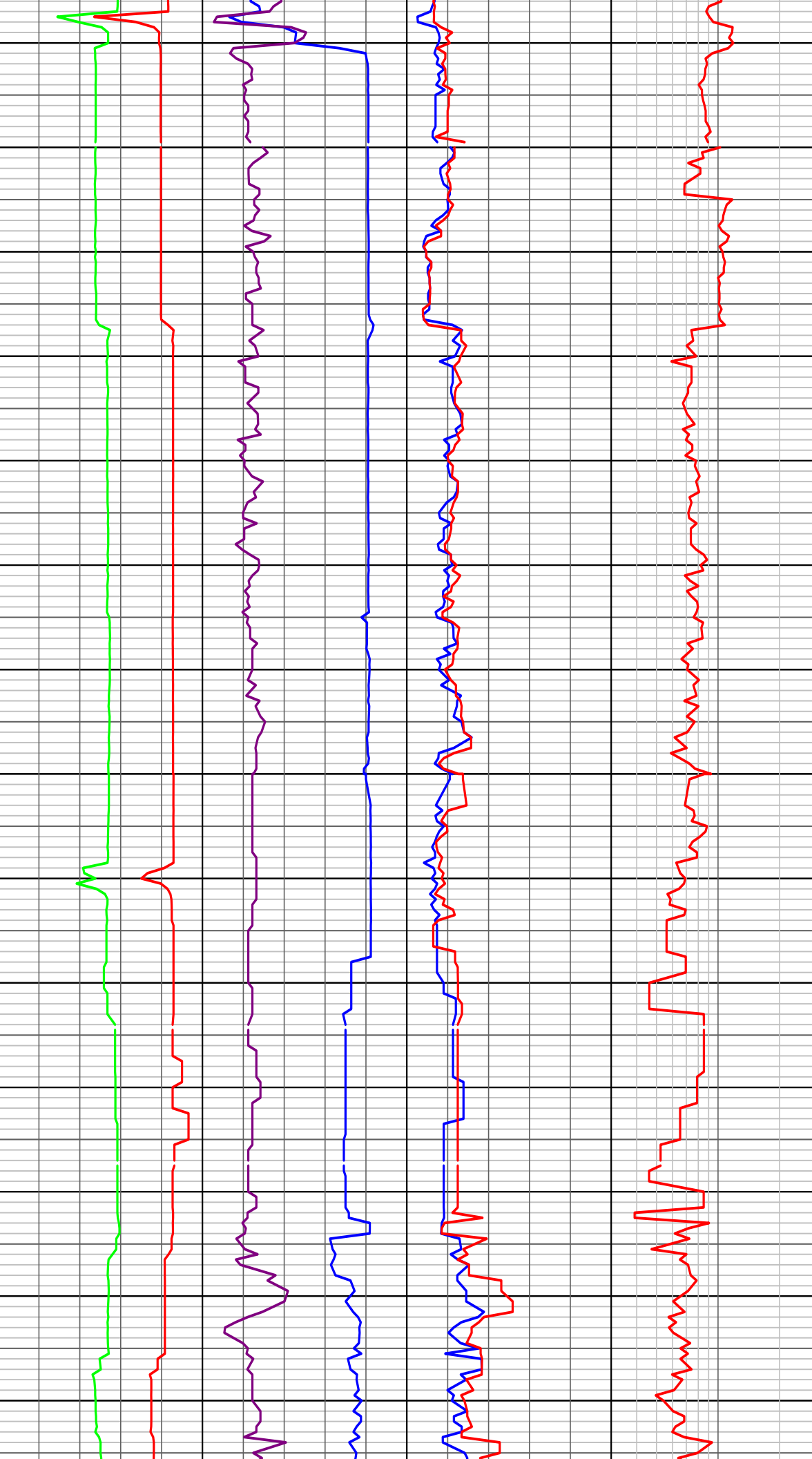
### HENRY 2DW1 ST1 DRILLING DATA PLOT

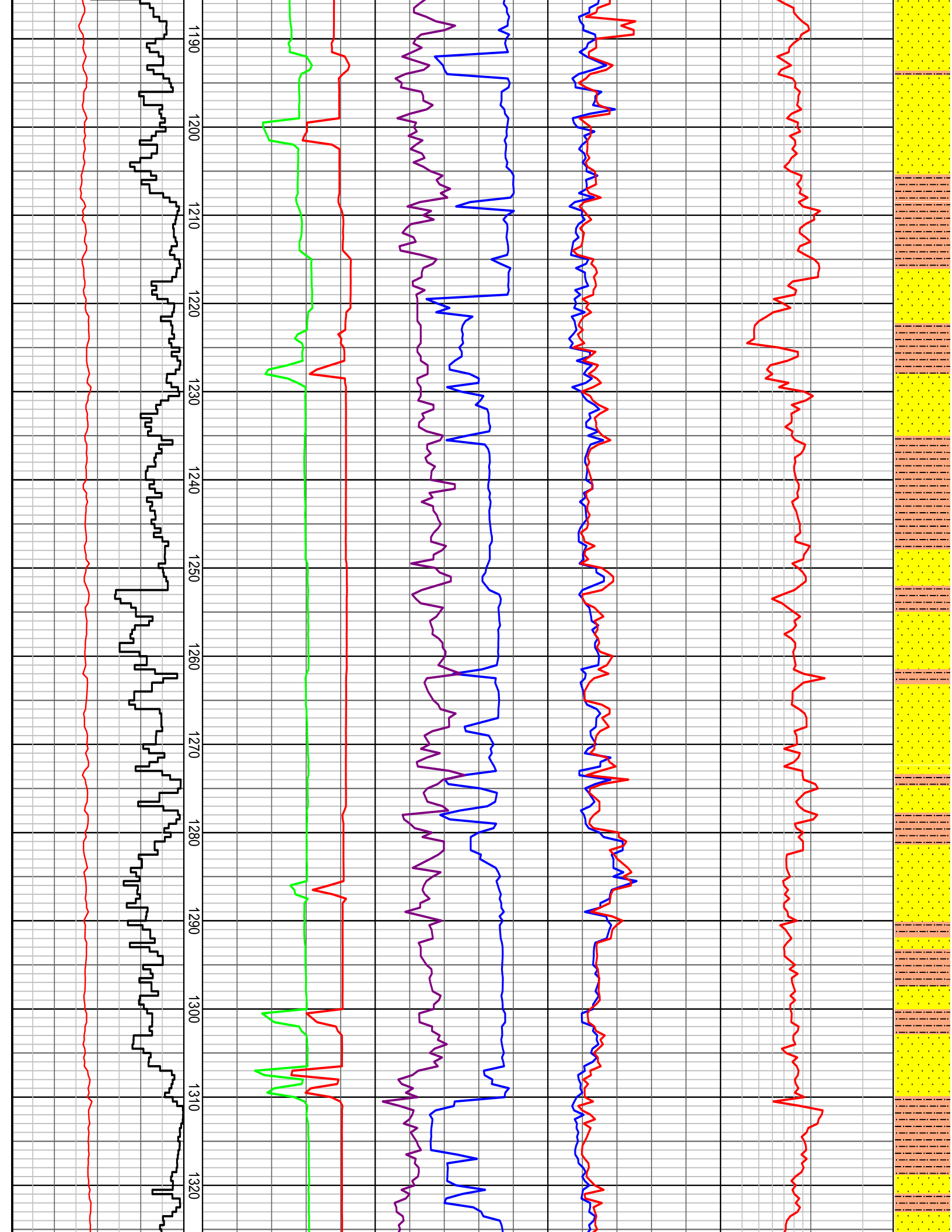


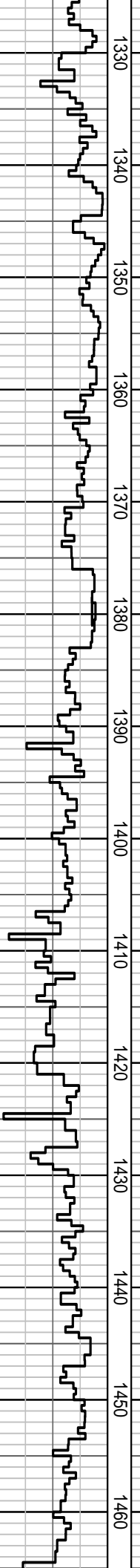
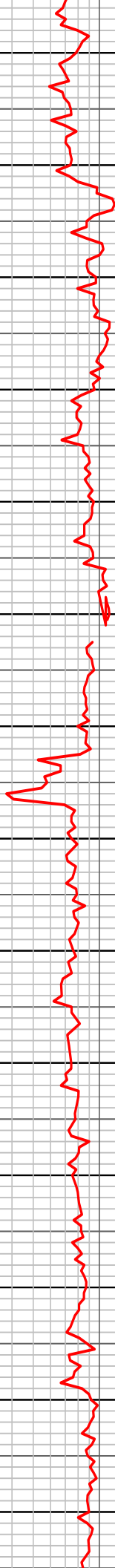
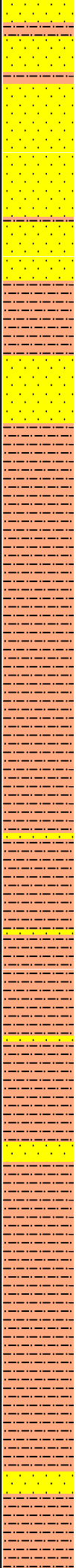


NB 10 REED RSX616M-A16 B5C  
Bit  
311mm (12-1/4") 3x15 3x16 jets  
In: 1050.00m Out: 2050.00m  
Drilled 1000.00m in 45.1hrs  
X.X.XX-X.X.XX.XX-XX

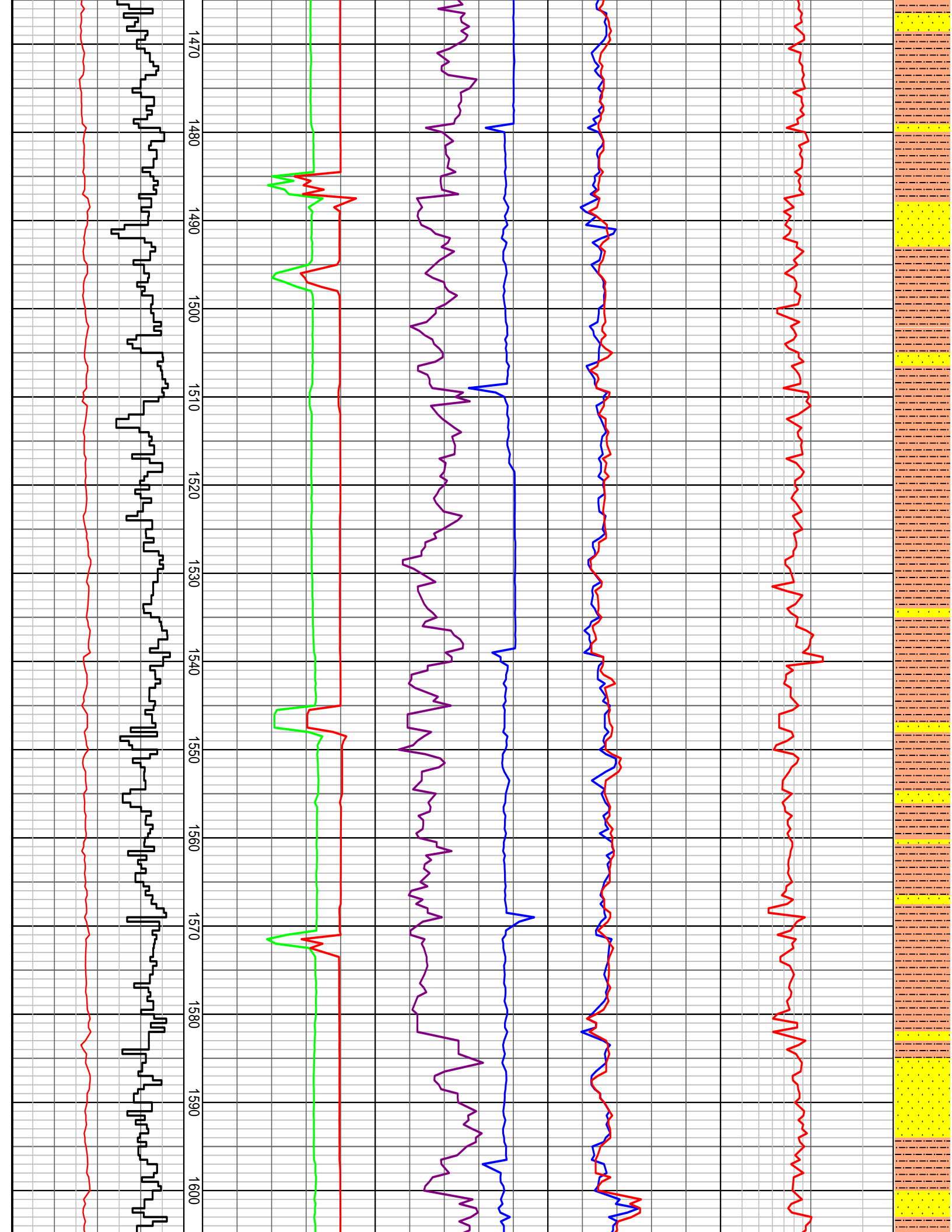
1050  
1060  
1070  
1080  
1090  
1100  
1110  
1120  
1130  
1140  
1150  
1160  
1170  
1180



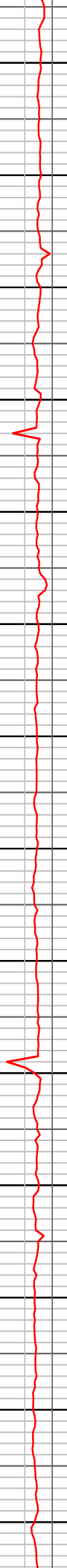
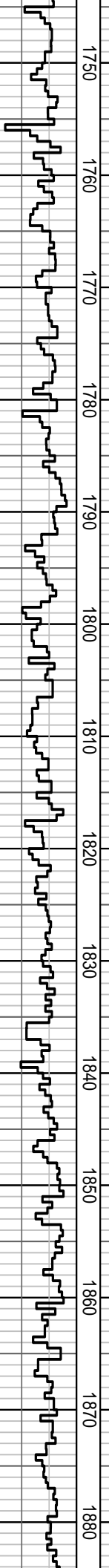
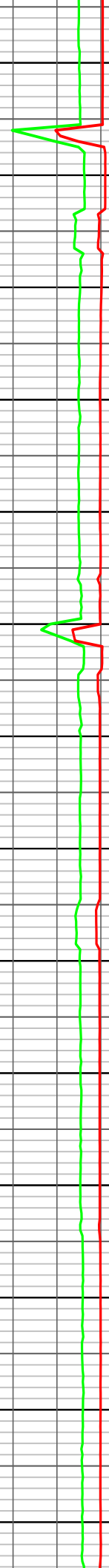
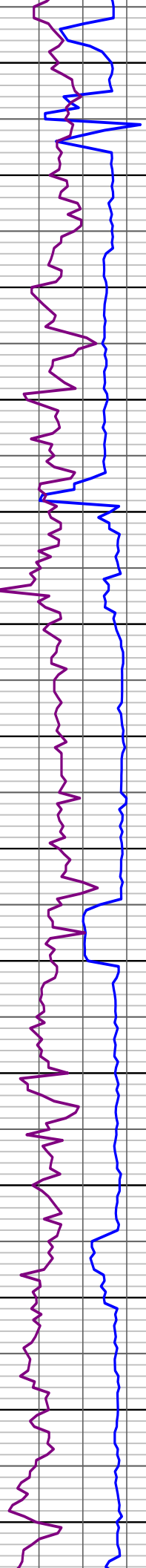
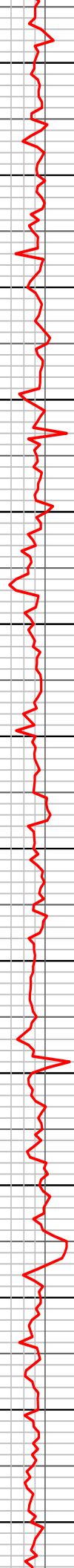
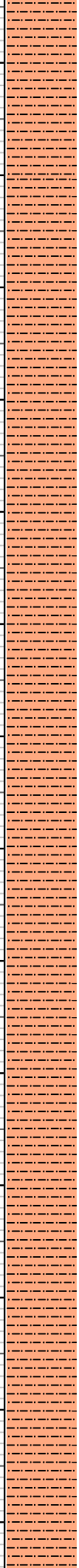




1330 1340 1350 1360 1370 1380 1390 1400 1410 1420 1430 1440 1450 1460

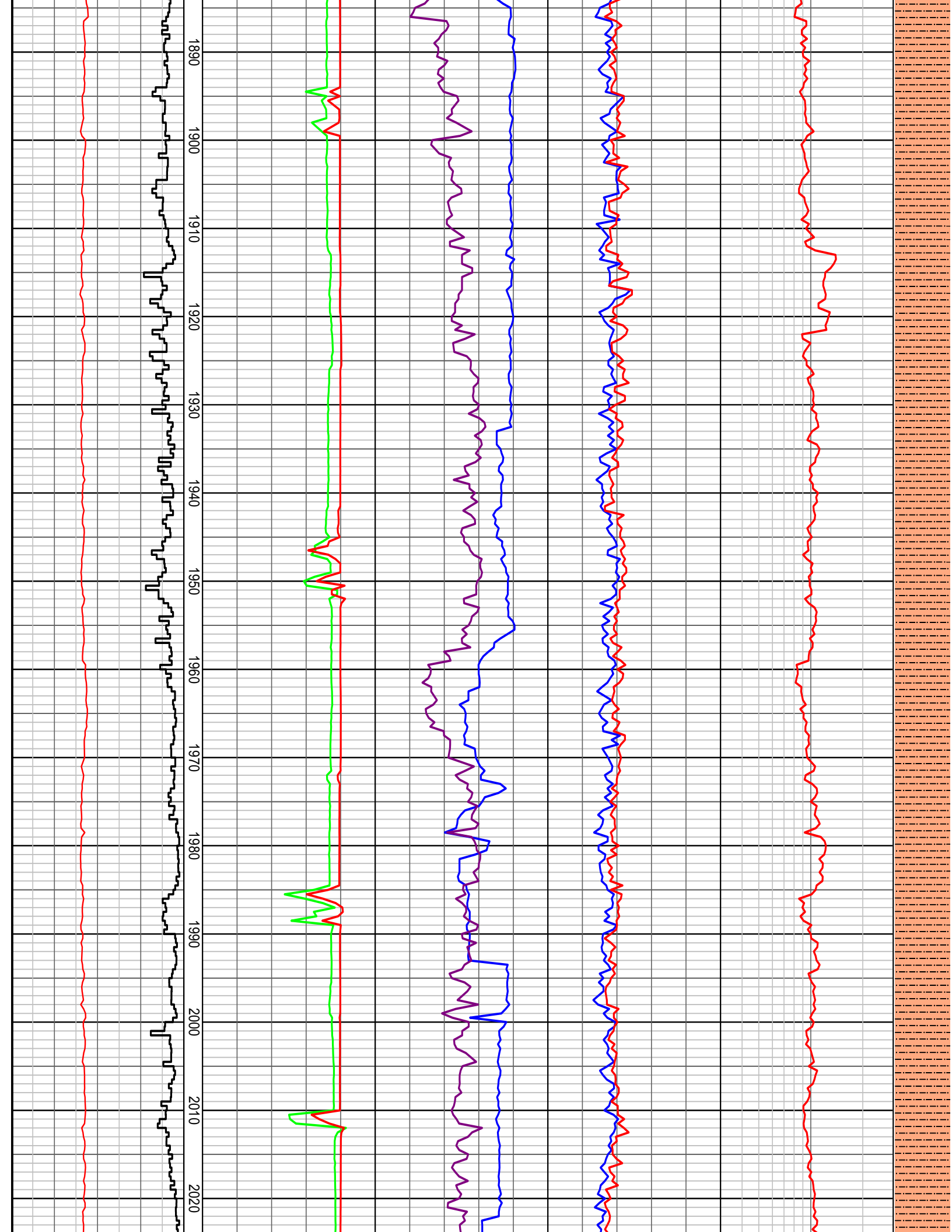


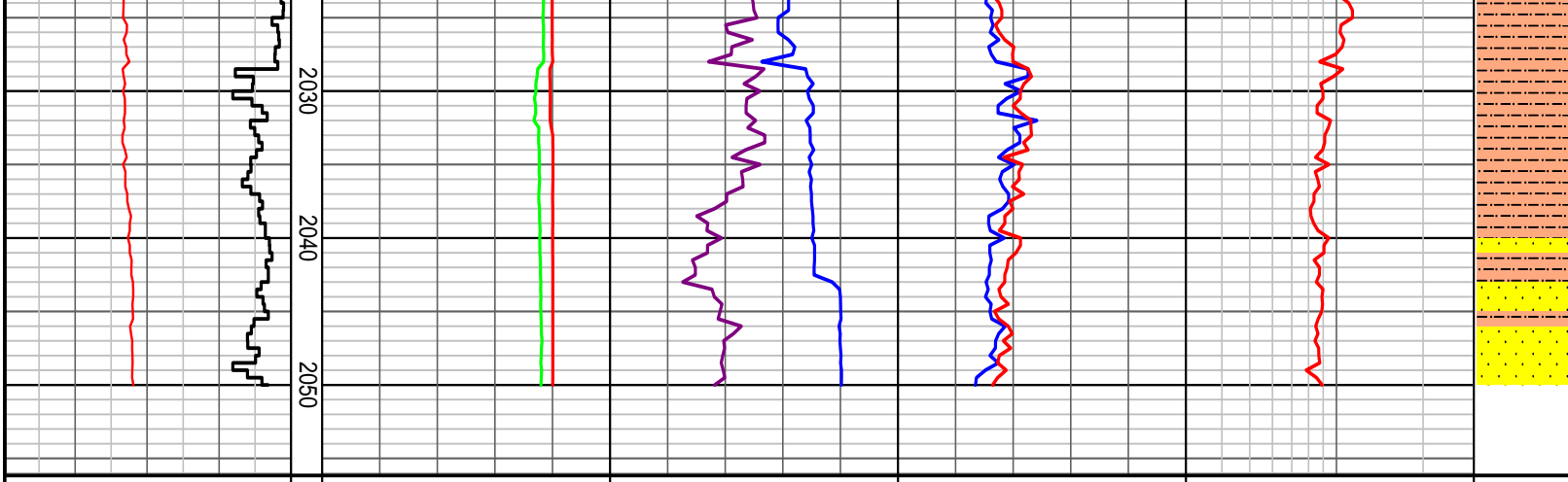




1750 1760 1770 1780 1790 1800 1810 1820 1830 1840 1850 1860 1870 1880







### HENRY 2DW1 ST1 DRILLING DATA PLOT

Hookload	Standpipe Pressure	Bit RPM	Torque Avg	DXC	INTERPRETED LITHOLOGY
100   200   300   400 klbf	1000   2000   3000   4000   5000 psi	50   100   150   200   250 RPM	5   10   15   20   25 kft.lb	unitless	
Rate of Penetration 200   150   100   50 m/hr	Flow In 240   480   720   960   1200 USg/min	Weight On Bit 10   20   30   40   50 klbf	Torque Max 5   10   15   20   25 kft.lb	3	